

HD AIR SPRINGS



WHY HD AIR SUSPENSION?

DRIVER COMFORT

Drivers report that trucks with air suspension glide over bumps much more easily and give increased handling confidence.

LESS WEAR AND TEAR

Air suspension means less vibration through the vehicle and that means less wear and tear on components on the truck or trailer.

BETTER EFFICIENCY

Better suspension means better cornering speeds and that leads to savings in travel time.

LOAD VERSATILITY

Air suspension can automatically level the suspension when loads are unevenly distributed, giving better braking and axle loads.

As the height can be adjusted, the truck or trailer can 'kneel' to help with loading, or it can be raised to clear obstacles.

ENVIRONMENTAL BENEFITS

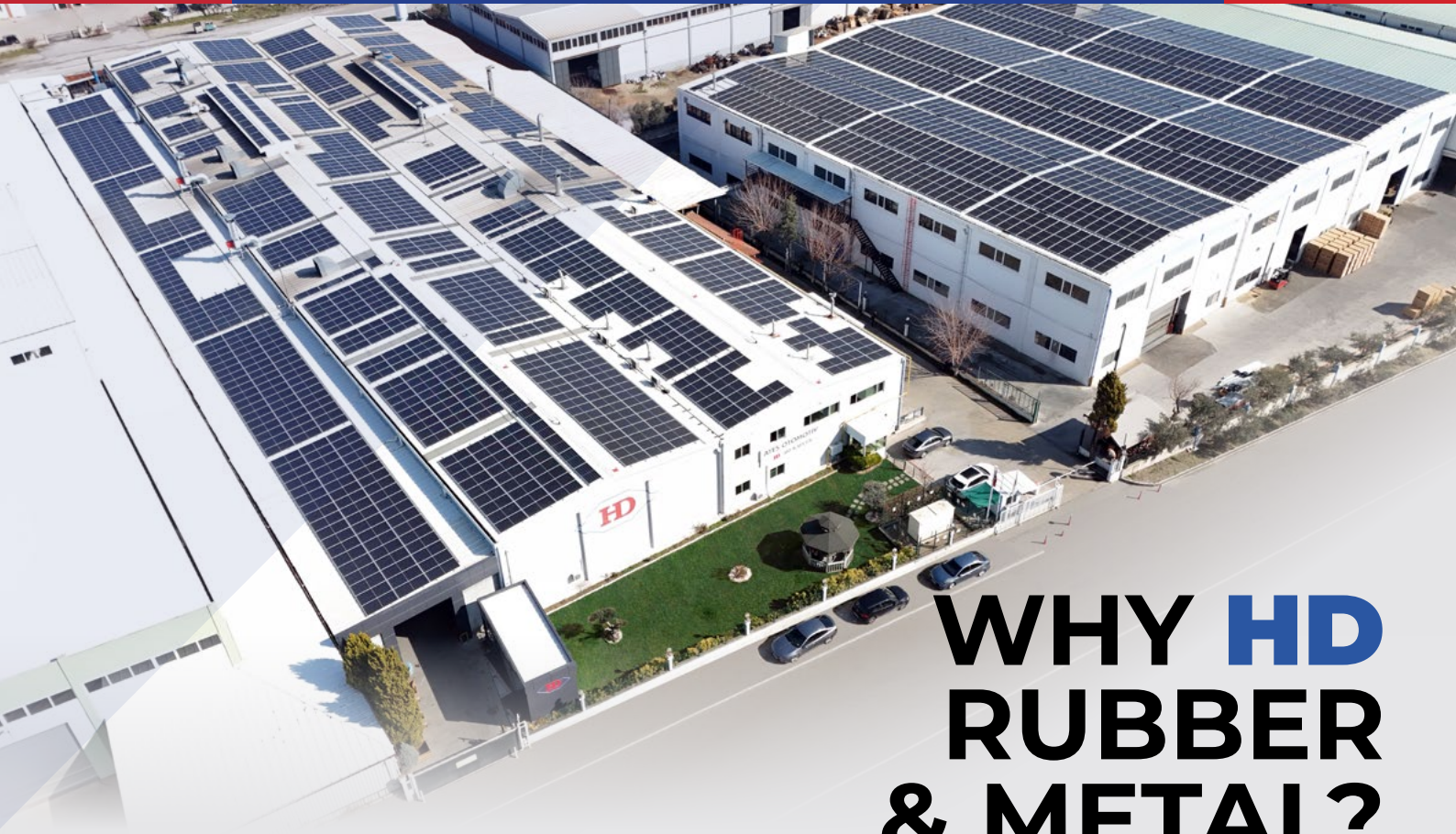
Less vibration is transmitted through the surface over the road meaning that the road surface (which also includes bridges and other structures attached to the road) don't degrade as quickly.

Fuel economy improvements mean less pollution into the atmosphere.

RESALE VALUES

Resale values are better on trucks and trailers with air suspension.





WHY **HD** RUBBER & METAL?

Whatever size or configuration our customers need, our team of engineers provide the experience and technical know-how to create the rubberparts specified to your needs.

- Protection against wear (for metal parts)
- Zinc, phosphate coating, top coat paint, protective oil processes.
- Chemical application with homogeneous automatic paint machine.
- The adhesion of the metal to the rubber is checked by the peeling test.

The engineering processes are continually being developed and improved to strengthen our position as leader in the industry. Ourdedication to quality has resulted in innovative products, proprietary process patented and unique products.

- Complete line of Rubber Part Solutions
- Customised Solutions
- Durability & Anticorrosive Technology
- Double sided welding Technology with 6 axle welding robot
- Innovative Parts Ready for assembly



AIR SPRING FATIGUE TEST



AUTO LEAK TEST MACHINES